

**TATA STEEL**  
WeAlsoMakeTomorrow

**TATA  
AGRICO**



Maximum Retail Price  
**CONSUMABLES**

w.e.f 1<sup>st</sup> July'22

# INDEX



*Abrasive Wheels*

03

---



*Drill Bits*

04

---



*Electrodes*

05

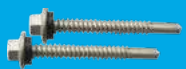
---



*TATA MIG Wire*

06

---



*Self Drilling Screws*

06


---





*Nails*


07


---


ABRASIVE WHEEL CUTTING WHEEL				
HSN - 68042210				
Item Code	Material Description	No. of pcs per Box	Rate / Pc* (₹)	Rate/Box* (₹)
ACW401	4" x 1 mm	50	25	1,250
ACW501	5" x 1.2 mm	50	40	2,000
ACW703	7" x 3 mm	10	100	1,000
ACW143	14" x 3mm	25	250	6,250

ABRASIVE WHEEL GRINDING WHEEL				
HSN - 68042210				
Item Code	Material Description	No. of pcs per Box	Rate / Pc* (₹)	Rate/Box* (₹)
AGW404	4" x 4 mm	30	49	1,470
AGW 406	4" x 6 mm	25	55	1,375
AGW506	5" x 6 mm	15	90	1,350
AGW707	7" x 6.5 mm	10	150	1,500
AGW907	9" Grinding Wheel	12	330	3,960

DIAMOND SAW BLADE				
HSN - 82022000				
Item Code	Material Description	No. of pcs per packet	Rate / Pc* (₹)	Rate/ packet* (₹)
DBS400	4 inch -SEG	10	160	1,600
DSC400	4 inch -CON RIM	10	175	1,750
DST400	4 inch -Turbo	10	175	1,750
DBS500	5 inch -SEG	10	215	2,150
DSC500	5 inch -CON RIM	10	225	2,250

TCT BLADE				
HSN - 82022000				
Item Code	Material Description	No. of pcs per Box	Rate / Pc* (₹)	Rate/ packet* (₹)
TCT430	4 inch - 30 Teeth	10	230	2,300
TCT440	4 inch - 40 Teeth	10	235	2,350
TCT530	5 inch - 30 Teeth	10	260	2,600
TCT540	5 inch - 40 Teeth	10	265	2,650

ABRASIVE WHEEL CUTTING WHEEL				
HSN - 68042210				
Item Code	Material Description	No. of pcs per Box	Rate / Pc* (₹)	Rate/ packet* (₹)
ACW402	4" Cutting Wheel Black - Half blotter - OSA	50	25	1,250
ACG401	4" Cutting Wheel Green 2 Net - OSA	50	25	1,250
ACR401	4" Cutting Wheel Red 2 Net - OSA	50	25	1,250
ACB143	Cutting Wheel Black ECO-14 Inch	25	245	6,125
ACG142	Cutting Wheel Green -14 inch	25	250	6,250
ACW403	4.5" Cutting Wheel OSA	50	40	2,000
CWM903	9" Cutting Wheel -Metal OSA	20	175	3,500
CWS903	9" Cutting Wheel -SS - OSA	20	185	3,700
CWM703	7" Cutting Wheel - Metal - OSA	40	115	4,600
CWS703	7" Cutting Wheel - SS - OSA	40	125	5,000

FLAP DISC - GRINDING & POLISHING				
HSN - 82022000				
Item Code	Material Description	No. of pcs per packet	Rate / Pc* (₹)	Rate/ packet* (₹)
AFD436	100MM - Grits-36	20	60	1,200
AFD460	100MM - Grits-60	20	60	1,200
AFD480	100MM - Grits-80	20	60	1,200
AFD412	100MM - Grits-120	20	60	1,200

**DRILL BITS**

MASONRY DRILL BITS

HSN - 82075000



Item Code	Material Description	Type of finish	No. of pcs per Box	Rate / Pc* (₹)	Rate/ Box* (₹)
DBC003	3.00 mm - 1/8	Nickel	10	83	830
DBC004	4.00 mm - 5/32	Nickel	10	93	930
DBC005	5.00 mm - 3/16	Nickel	10	97	970
DBC006	6.00 mm - 15/64	Nickel	10	119	1,190
DBC065	6.5 mm - 1/4	Nickel	10	110	1,100
DBC008	8 mm - 5/16	Nickel	10	218	2,180
DBC010	10.00 mm - 3/8	Nickel	10	247	2,470
DBC012	12.00 mm - 15/32	Nickel	5	316	1,580

**DRILL BITS**

GRANITE DRILL BITS

HSN - 82075000



Item Code	Material Description	Type of finish	No. of pcs per Box	Rate / Pc* (₹)	Rate/ Box* (₹)
DBM003	3.00 mm - 1/8	Nickel Chrome	10	133	1,330
DBM004	4.00 mm - 5/32	Nickel Chrome	10	156	1,560
DBM005	5.00 mm - 3/16	Nickel Chrome	10	165	1,650
DBM055	5.50 mm - 7/32	Nickel Chrome	10	207	2,070
DBM006	6.00 mm - 15/64	Nickel Chrome	10	234	2,340
DBM065	6.5 mm - 1/4	Nickel Chrome	10	202	2,020
DBM007	7.00 mm - 9/32	Nickel Chrome	10	276	2,760
DBM008	8 mm - 5/16	Nickel Chrome	10	358	3,580
DBM009	9 mm - 11/32	Nickel Chrome	10	460	4,600
DBM010	10 mm - 3/8	Nickel Chrome	10	418	4,180
DBM011	11 mm - 7/16	Nickel Chrome	5	579	2,895
DBM012	12 mm - 15/32	Nickel Chrome	5	524	2,620
DBM013	13 mm - 1/2	Nickel Chrome	5	515	2,575

**ELECTRODES**

STAINLESS STEEL ELECTRODES

HSN - 83111000



Item Code	Material Description	MOQ- Quantity in Master Box	No. of pcs per Packet	Rate/ Packet* (₹)
SSE001	TATA - SS308L 2.50 X 350 mm	5 Packets	84	1,330
SSE002	TATA - SS308L 3.15 X 350 mm	5 Packets	56	1,230
SSE003	TATA - SS308L 4.00 X 350 mm	5 Packets	38	1,230

**ELECTRODES**

LOW HYDROGEN CARBON STEEL

ELECTRODE - ISI GRADE

Radiographic Quality

HSN - 83111000



Item Code	Material Description	MOQ- Quantity in Master Box	No. of pcs per Packet	Rate/ Packet* (₹)
LHE001	TATA - E7018 2.50 X 350 mm	4 Packets	168	1,271
LHE002	TATA - E7018 3.15 X 450 mm	4 Packets	115	1,500
LHE003	TATA - E7018 4.00 X 450 mm	4 Packets	75	1,500
LHE004	TATA - E7018 5.00 X 450 mm	4 Packets	50	1,429



**ELECTRODES**  
 MILD STEEL ELECTRODE - ISI GRADE  
*Radiographic Quality*  
**HSN - 83111000**


Item Code	Material Description (mm)	MOQ-Quantity in Master Box	No. of pcs per Packet	Rate/ Packet* (₹)
MSE011	TATA - E6013 2.50 X 350	12 Packets	125	541
MSE012	TATA - E6013 3.15 X 350	12 Packets	90	555
MSE014	TATA - E6013 3.15 X 450	12 Packets	90	741
MSE015	TATA - E6013 4.00 X 450	12 Packets	60	749
MSE016	TATA - E6013 5.00 X 450	12 Packets	40	755
MSE013	TATA - E6013NP 3.20 X 350	4 Packets	155	1,100
MSE027	TATA - E6013NP 2.50 X 350	4 Packets	265	1,158
MSE028	TATA - E6013NP 4.00 X 450	4 Packets	85	1,158
MSE017	TATA - E6013 2.50 X 350	8 Packets	125	556
MSE018	TATA - E6013 3.15 X 350	8 Packets	90	556
MSE019	TATA - E6013 3.15 X 450	8 Packets	90	742
MSE020	TATA - E6013 4.00 X 450	8 Packets	60	751
MSE021	TATA - E6013 5.00 X 450	8 Packets	40	756
MSE022	TATA - E6013JK 3.15 X 350	12 Packets	85	622
MSE026	TATA - E6013JK 4.00 X 450	12 Packets	55	822
MSE023	TATA - E6013 Bluebond 2.50 X 350	12 Packets	100	543
MSE024	TATA - E6013 Bluebond 3.15 X 450	6 Packets	90	944
MSE025	TATA - E6013 Bluebond 4.00 X 450	6 Packets	60	944
MSE029	TATA-E6013 JK 3.15X350	8 Packets	85	950
MSE030	TATA-E6013 JK 4.00X450	8 Packets	55	950

**ELECTRODES**  
 MILD STEEL ELECTRODE - NON ISI GRADE  
**HSN - 83111000**


Item Code	Material Description	MOQ-Quantity in Master Box	No. of pcs per Packet	Rate/ Packet* (₹)
MNS001	TATA - NS E6013 2.50 X 350 mm	12 Packets	100	428
MNS002	TATA - NS E6013 2.90 X 350 mm	12 Packets	90	499
MNS003	TATA - NS E6013 2.90 X 450 mm	12 Packets	90	656
MNS004	TATA - NS E6013 3.75 X 450 mm	12 Packets	60	671
MNS005	TATA NS-E6013 2.70X350MM	12 Packets	90	472
MNS006	TATA NS-E6013 2.70X450 mm	12 Packets	90	615
MNS007	TATA NS-E6013 2.90X350 mm	8 Packets	90	499
MNS008	TATA NS-E6013 3.75X450 mm	8 Packets	60	671
MNS009	TATA NS-E6013 2.50X350 mm	8 Packets	100	428
MNS010	TATA NS-E6013 2.90X450 mm	8 Packets	90	656

**TATA MIG WIRE**

**HSN - 83111000**



Item Code	Material Description	Spool Size	MOQ- (No. of spools)	Rate/Box* (₹)
MMW001	TATA MIG Wire 0.80mm	300 mm	1	3,900
MMW002	TATA MIG Wire 1.20mm	300 mm	1	3,900
MMW003	TATA MIG Wire 0.80mm	270 mm	1	3,900
MMW004	TATA MIG Wire 1.20mm	270 mm	1	3,900
MMW005	TATA MIG Wire 1.00mm	300 mm	1	3,900
MMW006	TATA MIG Wire 1.60mm	300 mm	1	3,900
MMW007	TATA MIG Wire 1.00mm	270 mm	1	3,900
MMW008	TATA MIG Wire 1.60mm	270 mm	1	3,900

**SELF DRILLING SCREWS (TS)**

GREY RUSSPART / TEFLON COATING  
Outdoor/Roofing application



**HSN - 73181500**

Item Code	Material Description (Dia - Head Size X Length)	No. of pcs per Box	Rate / Pc* (₹)	Rate/ Box* (₹)
DSS001	SDS-SC-10-16 X 19mm	700	3.57	2,500
DSS002	SDS-SC-12-14 X 25 mm	500	5.52	2,760
DSS003	SDS-SC-12-14 X 35 mm	500	6.48	3,240
DSS004	SDS-SC-12-14 X 45 mm	400	7.13	2,850
DSS005	SDS-SC-12-14 X 55 mm	250	8.28	2,070
DSS006	SDS-SC-12-14 X 65 mm	200	9.50	1,900

**SELF DRILLING SCREWS - DOUBLE THREAD**

GREY RUSSPART / TEFLON COATING  
Outdoor/Roofing Application



**HSN - 73181500**

Item Code	Material Description (Dia - Head Size X Length)	No. of pcs per Box	Rate / Pc* (₹)	Rate/ Box* (₹)
DSDT04	SDS-SC- DT-12-14X45 mm	400	7.15	2,860
DSDT05	SDS-SC- DT-12-14X55 mm	250	8.32	2,080
DSDT06	SDS-SC- DT-12-14X 65 mm	200	9.5	1,900
DSSW01	SDS-SC-12-14X25-W19	400	8.13	3,250



# NEW PRODUCT LAUNCH

## TATA AGRICO CARPENTRY NAILS

HSN - 73170013



Item Code	Material Description	No. of pcs per Box	Rate/Box* (₹)
TN0306	TATA-AG-NAIL-BOX-4030-2KG X 12	12	300
TN0406	TATA-AG-NAIL-BOX-0406-2KG X 12	12	300
TN0506	TATA-AG-NAIL-BOX-0506-2KG X 12	12	300
TN0606	TATA-AG-NAIL-BOX-0606-2KG X 12	12	300
TN1508	TATA-AG-NAIL-BOX-1508-2KG X 12	12	300
TN0208	TATA-AG-NAIL-BOX-0208-2KG X 12	12	300
TN2508	TATA-AG-NAIL-BOX-2508-2KG X 12	12	300
TN0308	TATA-AG-NA IL-BOX-0308-2KG X 12	12	300
TN0408	TATA-AG-NAIL-BOX-0408-2KG X 12	12	300
TN1509	TATA-AG-NAIL-BOX-1509-2KG X 12	12	300
TN0209	TATA-AG-NAIL-BOX-0209-2KG X 12	12	300
TN2509	TATA-AG-NAIL-BOX-2509-2KG X 12	12	300
TN0309	TATA-AG-NAIL-BOX-0309-2KG X 12	12	300
TN1510	TATA-AG-NAIL-BOX-1510-2KG X 12	12	300
TN0210	TATA-AG-NAIL-BOX-0210-2KG X 12	12	300
TN2510	TATA-AG-NAIL-BOX-2510-2KG X 12	12	300
TN0310	TATA-AG-NAIL-BOX-0310-2KG X 12	12	300
TN1511	TATA-AG-NAIL-BOX-1511-2KG X 12	12	300
TN0211	TATA-AG-NAIL-BOX-0211-2KG X 12	12	300
TN2511	TATA-AG-NAIL-BOX-2511-2KG X 12	12	300
TN0311	TATA-AG-NAIL-BOX-0311-2KG X 12	12	300
TN1512	TATA-AG-NAIL-BOX-1512-2KG X 12	12	300
TN0212	TATA-AG-NAIL-BOX-0212-2KG X 12	12	300
TN2512	TATA-AG-NAIL-BOX-2512-2KG X 12	12	300
TN0312	TATA-AG-NAIL-BOX-0312-2KG X 12	12	300

## TATA AGRICO CONCRETE NAILS

HSN - 73170013



Item Code	Material Description	No. of pcs per Box	Rate/Box* (₹)
CNB103	AGRICO-CON-NAIL-3.5X1"(25mm)	20	280
CNB154	AGRICO-CON-NAIL-4.0X1.5"(38mm)	20	280
CNB204	AGRICO-CON-NAIL-4.25X2"(50mm)	20	280
CNB254	AGRICO-CON-NAIL-4.25X2.5"(63mm)	20	280
CNB305	AGRICO-CON-NAIL-5 X 3.0"(75mm)	20	280

## TATA AGRICO CARPENTRY NAILS (FINER SIZE NAILS)

HSN - 73170013



Item Code	Material Description	No. of pcs per Box	Rate/Box* (₹)
TN0113	TATA-AG-NAIL-0113-2KG X 12	20	350
TN1513	TATA-AG-NAIL-1513-2KG X 12	20	350
TN1713	TATA-AG-NAIL-1713-2KG X 12	20	350
TN0114	TATA-AG-NAIL-0114-2KG X 12	20	350
TN1514	TATA-AG-NAIL-1514-2KG X 12	20	350
TN0214	TATA-AG-NAIL-0214-2KG X 12	20	350
TN2514	TATA-AG-NAIL-2514-2KG X 12	20	350
TN0314	TATA-AG-NAIL-0314-2KG X 12	20	350

## OUR PRODUCT RANGE

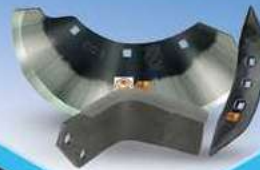
### Hand Tools



### Agri Tools



### Mechanized Consumables



### Welding Rods



### Abrasive Wheels



### Self Drilling Screws




# TATA AGRICO


12th floor, Tata Centre, 43 Jawaharlal Neheru Road Kolkata 700 071, India  
Ph: 91 33 2224 8661/3475, FAX 91 33 2288 8850  
E-mail: [agricomarketplace@tatasteel.com](mailto:agricomarketplace@tatasteel.com)

[www.tataagrigo.com](http://www.tataagrigo.com)

Toll free helpline: **1800 108 8282**

 Join us on **officialtataagrigo**

 Follow us on **officialtataagrigo**

 Follow us on **@Agricotata**